

# \$125m twin towers completed

PROPERTY

**COMMANDING VIEW:** Reaching out to the horizon? Not quite. But a private swim high up on top of the 11th floor penthouse of the Eleven twin towers keeps the owner in touch with the surrounding natural environment.

PICTURE / PICTURE JOHN BORREN 161009JB10

by Graham Skellern  
Business Editor

Recession didn't stop Rob Donald building Tauranga's biggest and most luxurious high-rise apartment complex.

The \$125 million Eleven twin towers development, overlooking the Main Beach and Pilot Bay at Mount Maunganui, has been completed, and owners will begin moving in within three weeks.

Backed by funding from BOS International, the construction of 61 luxury apartments on 11 levels at the start of Maunganui Rd didn't miss a beat.

"We had great team spirit on the job, and everyone involved seemed to enjoy it. The quality is best I've seen in my 33 years experience," said designer and developer Dr Donald, who also built Sun Pacific Villas, Hot Spot apartments and Customhouse building at the Mount.

Nearly 500 people — builders, tradespeople, consultants, council staff — played a part in the development over the past 21 months that started with the removal of 17 houses and units on the amalgamated 3985sq m site.

From the curved Alucobond aluminium composite balcony panels and the laminated sound-proof glass, to the blonded oak apartment doors, Italian-designed kitchens, German-imported Miele appliances, Spanish porcelain tiling and thick woollen carpet, everything is tastefully finished in the Eleven twin towers.

A wealthy Aucklander paid the highest price of \$6.45m for the 400sq m penthouse in the northern tower, and he can swim in his own private 15m-long lap pool on the 11th floor — with a sea view along the Mount to the Papamoa Hills and the coast, and across Pilot Bay.

So far, 35 of the 61 apartments — there are 32 in the towers and 29 on the two-level podium — have been sold.

The remaining apartments range in price from \$645,000 in the podium to \$5.45m for the penthouse in the Marine Parade wing.

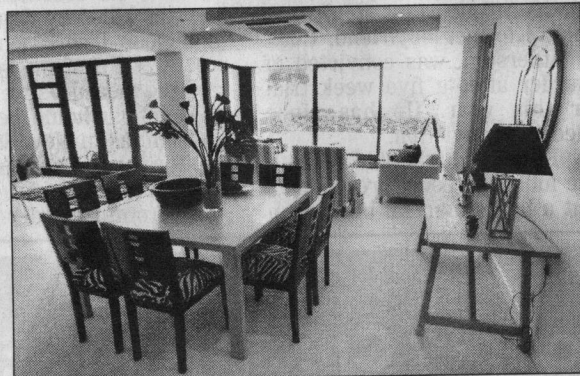
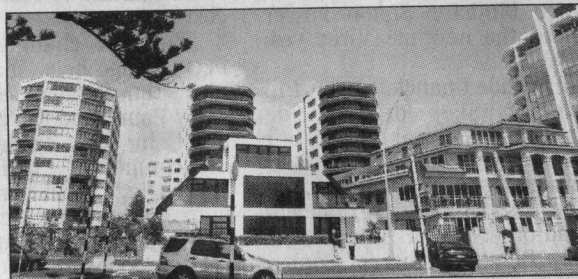
Dr Donald said, "People are in cautious mode as we all emerge from the recession, and I don't have a problem with that.

"Prospective buyers want to make sure they have all the information and that everything is finished off properly. Right now



**IT'S THE BEST:** Eleven designer and developer Rob Donald is happy with the quality of the final product — and the curved aluminium composite balcony panels provide a dramatic finish.

PICTURE / JOHN BORREN 161009JB10



**LUXURY:** Above, from Marine Parade through to Maunganui Rd, the twin towers complex provides a range of apartments, with open plan living and air conditioning throughout. Alongside, hanging baskets

